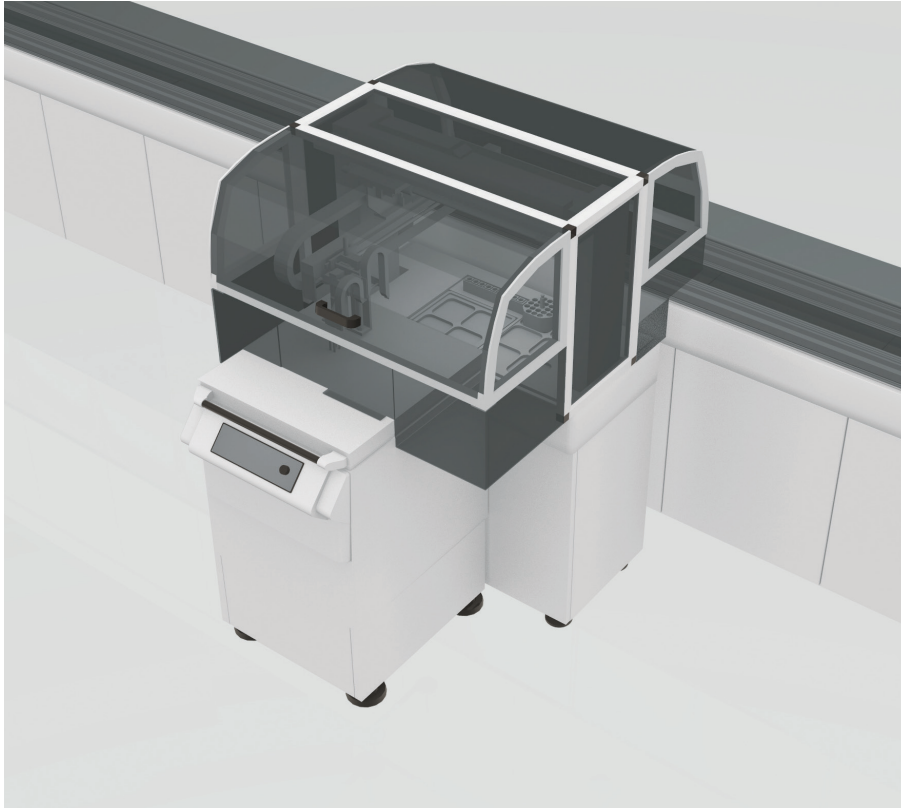


Centrifuge Module (CM)

Technical Data Sheet

The Centrifuge Module automates centrifugation processing for sample blood separation. The Centrifuge Module includes loading and unloading areas and the Hettich refrigerated Centrifuge. Operating parameters of the Centrifuge module can be easily set by the User Interface to customize the centrifugation process basing on the specific laboratory guidelines.

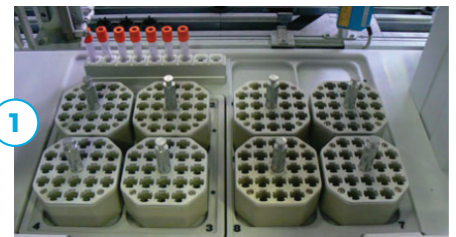
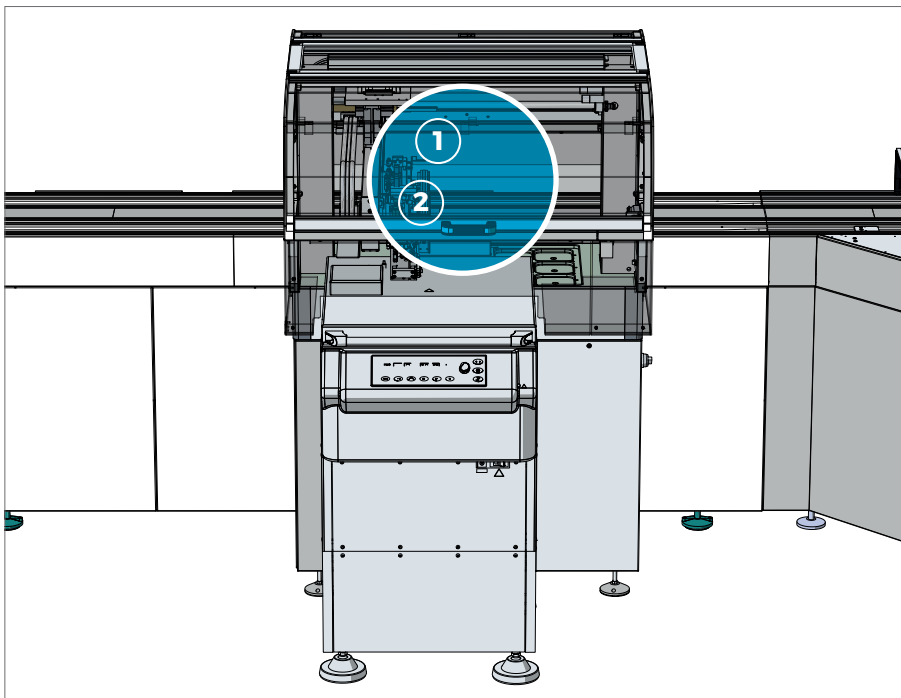


Benefits

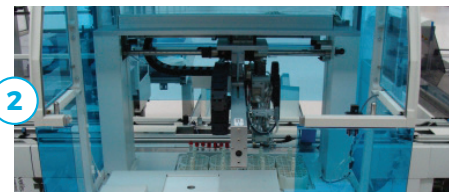
- > Standardized process, at least for most sensitive samples (coagulation tubes recentrifuged)
- Automatic management
- > of tubes balancing through weight check
- > Customized profile per each module (Timeout for STAT and Routine, Temperature, duration and spin speed)
- > Priority unloading of STAT tubes

Applications

- > Necessary for all clinical blood analysis, excluding hematology



1 Bucket Inserts Loading in Output Position (left) and Unloading in Input Position (right)



2 Refrigerated Centrifuge Unit and Internal Rotor

Main Features

Throughput	Up to 300 tubes/h
Walk-away capacity	Always automatically loaded
Tube specifications	
Sample type	Unspun
Cap type	Capped
Dimensions (mm)	13x75, 13x100, 16x75, 16x100
Position along the automation	Pre-Analytical area

The maximum throughput calculations are obtained in optimized and standardized conditions, as tested by Inpeco.

Other Features

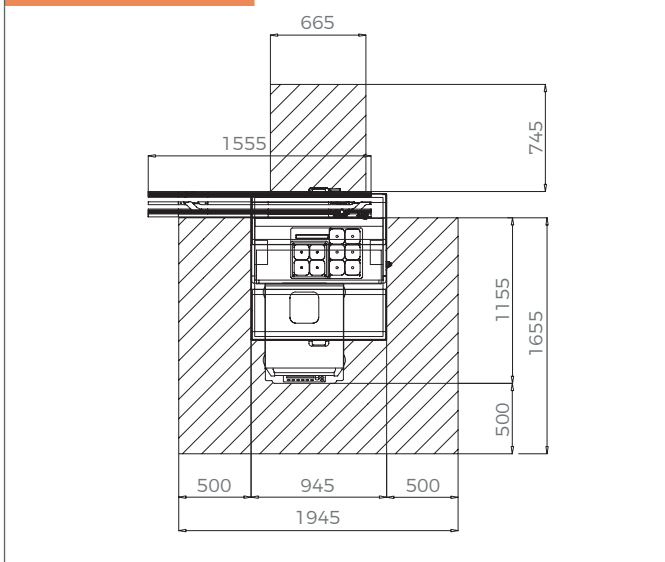
- > CM provides a single, user-definable time, speed, and temperature profile
- > CM controls the sample tube weight balancing into and within the bucket inserts using a Balance Scale in Input position
- > CM rotor has 4 balancing buckets, 4 bucket inserts each
- > Bucket inserts accommodate up to 80 tubes (20 tubes for each bucket)
- > Configurable running speed from 1000 rpm up to 4500 rpm
- > CM provides the mean to use the Centrifuge in stand alone mode in case of emergency

Technical Specifications

Dimensions (LxHxD) (mm)	945x1510x1155
Main clearances (left x right x front) (mm)	500x500x500
Weight (Kg)	385
Compressed air (NL/min)	4.59 (Stan)
Power inlet point	230 Vac

Maximum continuous current (A)	/
Maximum alternate current (A)	2.6
Real power consumption (W)	598
Heat (BTU/h)	1626.6
Noise (dBA)	63-67 according to operator's position

Technical Drawing



Module dimensions and clearances expressed in mm.

Ordinary Maintenance

Operator ¹	/
Service ²	Every 60-180 days, according to operations

¹ According to Operation Manual. ²The periodicity depends also on the routine tubes/day. For more details refer to Service Manual.

Part Numbers	FlexLab™ Standard	FlexLab™ HT
Module	FLX-202-05	FLX-202-14
Slot	FLX-502-02	FLX-502-11

Inpeco SA
Via Torraccia 26
6883 Novazzano
Switzerland
inpeco.com



reference code: SSF-mIOM 23.03
version n°: EN04