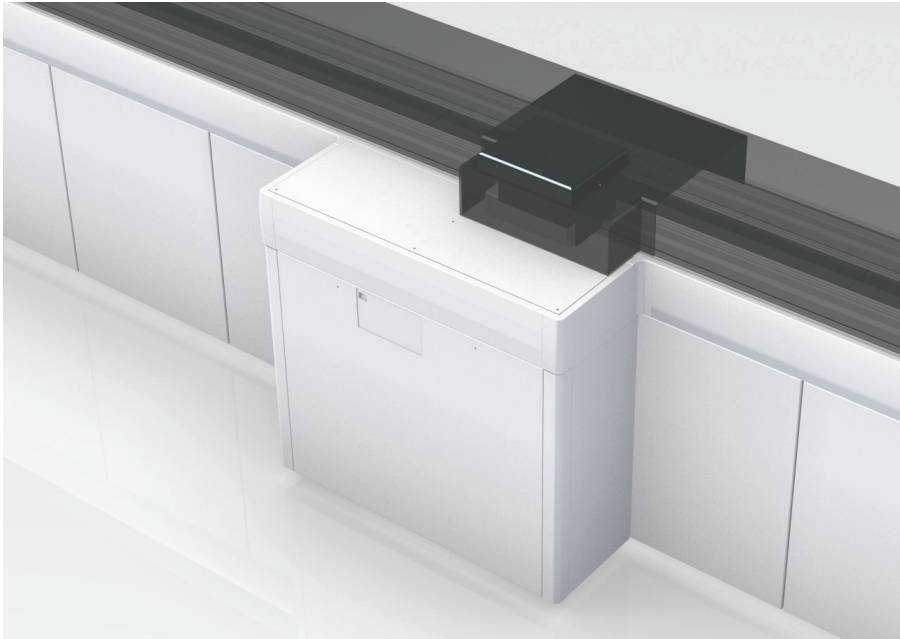


Pressure Recapper Module (PRM) Technical Data Sheet

The Pressure Recapper Module automate the mounting of plastic push caps of plastic push caps on secondary sample tubes produced by the Aliquoter Module (ALQ), making them ready for further processing.

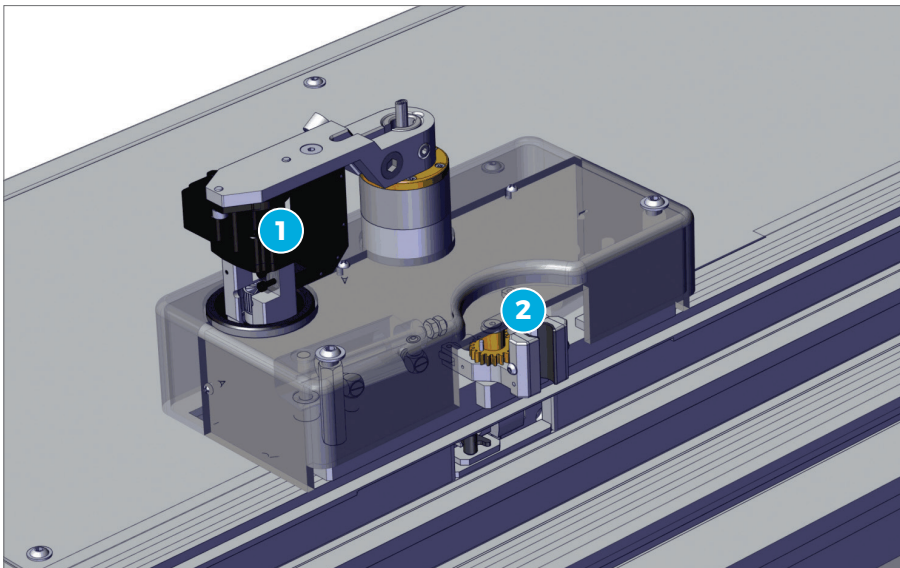


Benefits

- > Reduction of dangerous and dirty tasks from Operator's activities
- > Physical-chemical properties of samples maintained thanks to the recapping process (evaporation and contamination prevented)

Applications

- > Recapping of secondary sample tubes after aliquoting



① Head with Cap Gripper

② Tube gripper



Main Features

Throughput	Up to 600 tubes/h
Walk-away capacity	1000 tubes (caps container capacity)
Tube specifications	
Sample type	Spun (Aliquoted)
Cap type	Uncapped
Dimensions (mm)	13x75
Position along the automation	After Aliquoter Module (ALQ)

The maximum throughput calculations are obtained in optimized and standardized conditions, as tested by Inpeco.

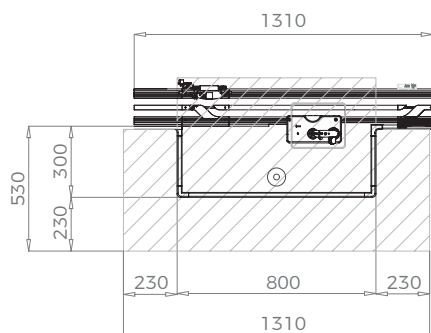
Other Features

- > PRM caps hopper contains a up to 1000 caps
- > The tube gripper device holds sample tubes while capping
- > PRM is provided with a Pressure Switch to detect the Pressure System Fault

Technical Specifications

Dimensions (LxHxD) (mm)	910x1055x300
Main clearances (left x right x front) (mm)	230x230x230
Weight (Kg)	59
Compressed air (NL/min)	21
Power inlet point	230 Vac

Technical Drawing



Module dimensions and clearances expressed in mm.

Maximum continuous current (A)	/
Maximum alternate current (A)	1.8
Total power consumption (W)	331.2
Heat (BTU/h)	1126.1

Ordinary Maintenance

Operator ¹	/
Service ²	Every 90-180 days, according to operations

¹ According to Operation Manual. ²The periodicity depends also on the routine tubes/day. For more details refer to Service Manual.

Part Numbers	FlexLab™	FlexLab™ for High Throughput
Main module	N.A.	FLX-205-11
Slot	N.A.	FLX-505-11

N.A. = Not Available.

Inpeco SA

Via Torraccia 26
6883 Novazzano
Switzerland
inpeco.com



reference code: SSF-PRM 23.03
version n°: EN03